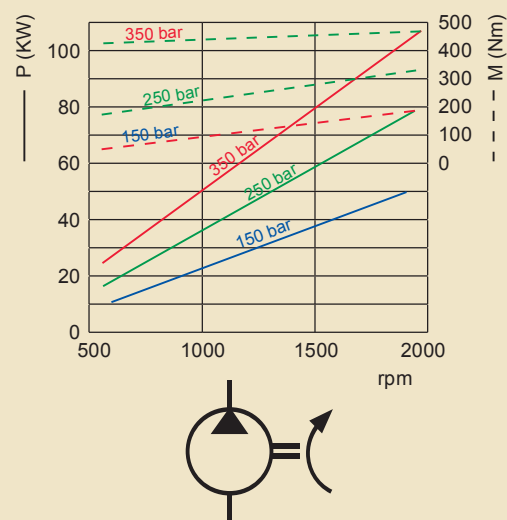
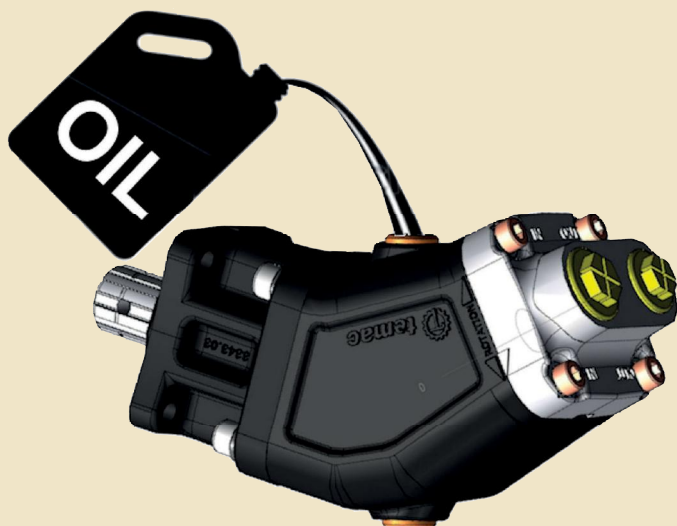


## TECHNICAL SPECIFICATIONS

Displacement	78.3	cm <sup>3</sup>
Max peak pressure	350	bar
Max intermittent pressure	315	bar
Max continuous pressure	240	bar
Max speed at intermittent press.	2000	RPM
Min speed at intermittent press.	400	RPM
Oil Temperature range	- 25÷80	°C
Inlet press. Range (suction port)	0.7÷1.5	bar
Oil viscosity range	10÷46	cSt
Max starting viscosity	1000	cSt
Mass	11±0.5	kg

## POWER & TORQUE





### FILL WITH OIL BEFORE START-UP

### SUCTION TUBE:

The internal diameter of Suction Tube has to be chosen on the strength of maximum operation speed:

RPM '	600	1000	1500	2000÷2200
Internal Tube Ø	1¼"	1¾"	2"	2½"

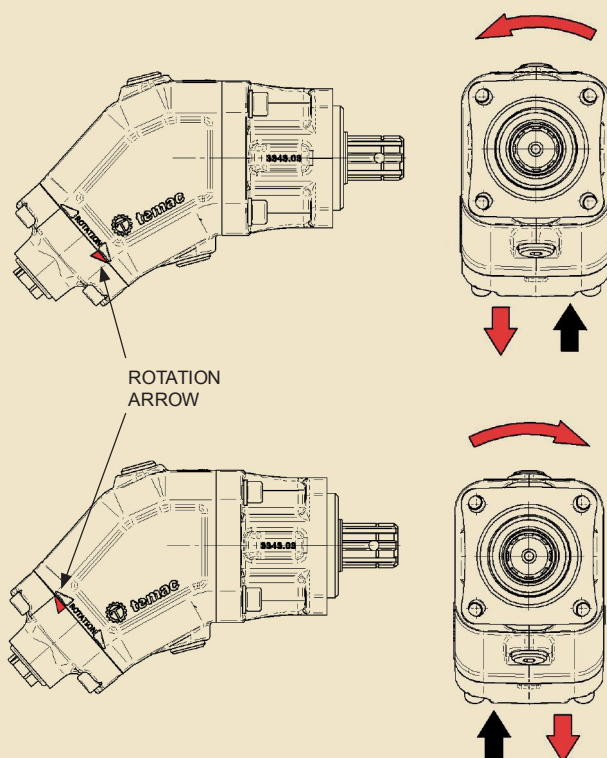
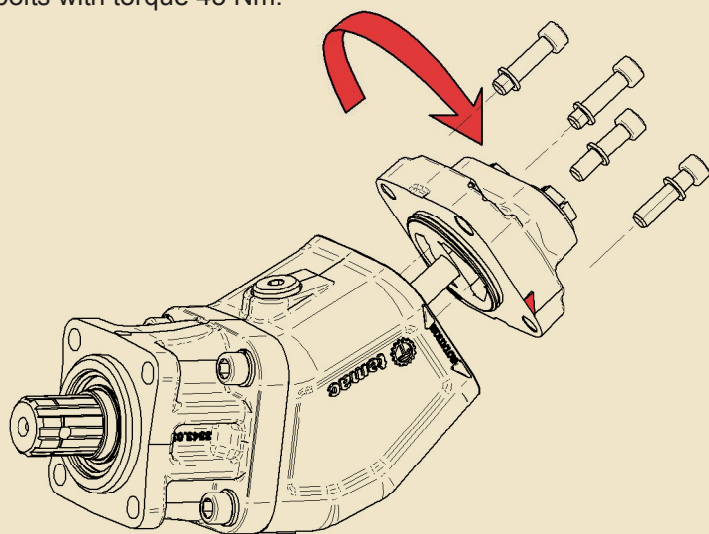
When the Pump is installed above the Oil Tank level, fit it to place Inlet Port above the Outlet Port.  
Always fill the Pump with Oil before start-up.

### FITTING OF THE PUMP

Be sure that the PTO rotates according to the Pump.  
If not, then: change the Rotation of the Pump as shown here after.

### CHANGE OF ROTATIONAL DIRECTION

To change the Direction of Rotation:  
unscrew the 4 bolts,  
turn Rear Cover 180° and re-assemble tightening the 4 bolts with torque 45 Nm.



### ROTATIONAL DIRECTION

Pump 3343.99 has Inlet Port 1" & Outlet Port 3/4".  
To identify the direction of rotation set by the factory you may rely on the Mark on side.

Or:

Look at the Pump from Drive Shaft:

Inlet Port on the right means Rotation is CLOCKWISE

Inlet Port on the left means Rotation is ANTI-CLOCKWISE

### SAFETY KIT FOR OIL LEAKING

The enclosed kit is to detect any Oil leaking in case of Shaft Seals failure.

Screw-in the Fitting Unit, connect the tube and secure it as shown in the picture.

